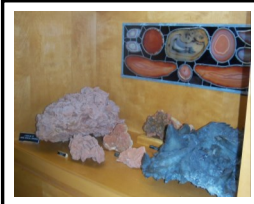


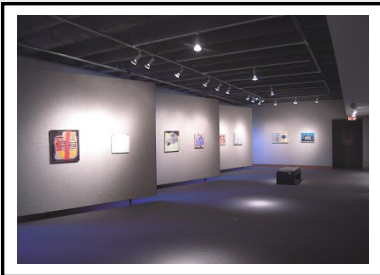
PLACES TO SEE AND THINGS TO DO IN SEWARD COUNTY NEBRASKA

ART GALLERIES AND MUSEUMS



BARTELS ROCK & MINERAL MUSEUM—Lower Level of Link Library at Concordia University, 800 N. Columbia Ave, Seward. Open during library hours: Monday-Friday, 8-5 pm,

Saturday 10-5 pm, Sunday 1-6 pm. Closed the first week of June and the first two weeks of August. Special arrangements for visitors. 402.643.3566 <http://www.cune.edu/about/maps/bartels-museum/>



MARXHAUSEN GALLERY Concordia University 800 N. Columbia Ave. Open Monday-Friday 11am-4pm, Saturday and Sunday 1-4pm while classes in session. 402.643.3651



RED PATH GALLERY & TASTING ROOM

514 Seward St, Seward
Open Wednesday & Thursday: 11am-5pm
Friday & Saturday: 10am-8pm
Sunday: 1-4pm
402.540.6929 • redpathgallery.com

LANGWORTHY GALLERY—CIVIC CENTER

616 Bradford St, Seward, Open Monday-Friday 8am-5pm
402-643-4470 • www.sewardciviccenter.org



SEWARD COUNTY HISTORICAL SOCIETY MUSEUM AT GOEHNER

Rich in county heritage, the museum features a one-room schoolhouse,

a restored 1908 home, antique farm equipment, vintage autos, dishes, doilies, dolls and more. The Chippewa Northwestern Railway Co., a one-inch scale live steam railroad runs on the six-acre grounds from May to October on the 2nd & 4th Sundays. Free train rides. Open Thursdays 10am-4pm, Sundays 1:30pm-5pm. 402.523.4055 (for appt) www.sewardcountymuseum.org



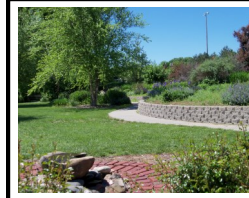
NEBRASKA NATIONAL GUARD MUSEUM

Building dedication July 2015.
Phase I July 2016.
Phase II July 2017.
www.nnghs.org

RECREATION



SEWARD'S UNIQUE ROUND POOL
Our unique round pool offers water features, zero level entry and a lap pool. Contact 402.643.4674 or visit cityofsewardne.com for hours.



SEWARD'S HIKING, BIKING & NATURE TRAIL—The Plum Creek Trail is a 2.7 mile concrete hiking and biking trail that winds through the east side of Seward. It starts near the Seward Sports Complex on Karol Kay Boulevard and ends on the south side of Seward on South Columbia. (Expansion is underway)



THE PLUM CREEK SPORTS COMPLEX has soccer, baseball, and softball fields, batting cages, playground units, an outdoor basketball court, sand volleyball court and 18 hole disc golf course. For area sports schedules call City Parks & Rec at 402.643.3511 or visit SHS and CU websites at www.sewardpublicschools.org and www.cune.edu.

TASTING ROOMS AND BREWERIES



JUNTO WINE—
1356 182nd Rd
Situated between Lincoln and Seward, the rolling Garland hills provide an opportunity to craft unique wines and offer stunning views. Open Thursday-Friday 4-9pm, Saturday 1-9pm, Sunday 1-6pm. Available by Appt. 402.803.0587 • juntowine.com

RED PATH GALLERY & TASTING ROOM

514 Seward St, Seward
Open: Wed & Thu 11am-5pm, Fri & Sat 10am-8pm,
Sunday 1-4pm • 402.540.6929 • redpathgallery.com



BOTTLE ROCKET BREWING
230 5th St. • 402.304.5673
bottlerocketbrewing.com

Seward Area Chamber of Commerce
Seward County Visitors Committee

616 Bradford St. • Seward, Nebraska 68434
402.643.4189 • sewcham@sewardne.com

See other side...



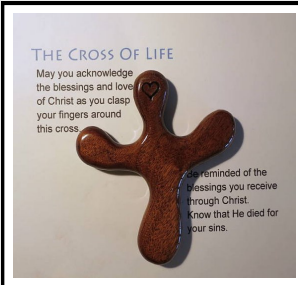
EVEN MORE PLACES TO SEE AND THINGS TO DO IN SEWARD COUNTY NEBRASKA

OTHER PLACES OF INTEREST



WORLD'S LARGEST TIME CAPSULE

Don't forget to drive by the World's Largest Time Capsule on Hillcrest Ave. It took about three weeks and over 60 cubic yards of cement to build. It houses a 1976 Chevy Vega and a motorcycle along with hundreds of other items. It is scheduled to be opened in 2025.



THE SEWARD CROSS MAKERS are a group of men and women who give of their time to create hand crafted wooden crosses to extend God's richest blessings to you. Contact them for a tour at thecrossmakers@yahoo.com.



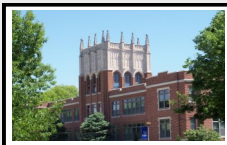
GOEHNER CENTENNIAL PLAYERS MELODRAMAS are held for several weeks each June at the **OLDE GLORY THEATRE** in Seward. Other plays and concerts take place throughout the year. OldeGlorySewardNE.com



RIVOLI THEATRE-a beautiful, renovated 90 year old historic theatre. Two theatres featuring Art Deco and beautiful pastel murals. www.rivoliseward.com

EDUCATION

CONCORDIA UNIVERSITY
800 N. COLUMBIA
SEWARD
www.cune.edu



SOUTHEAST COMMUNITY COLLEGE—MILFORD CAMPUS
600 S. STATE ST., MILFORD
www.southeast.edu/MilfordCampus

ST. GREGORY THE GREAT SEMINARY
800 FLETCHER ROAD, SEWARD
www.stgregoryseminary.edu



CELEBRATIONS & EVENTS



SEWARD'S 4TH OF JULY

Nebraska and the United States' official small town 4th of July! Celebrated since 1868, visitors will experience a full day of family activities, entertainment, craft fairs, contests and a grand parade. For more information, go to julyfourthseward.com. Festival held every year on July 4th!



SEWARD COUNTY FAIR

Held annually in August, the fair showcases 4-H and FFA projects, open class entries and local and regional entertainment. The food court and fair restaurants provide a wide variety of tasteful entrees for every palate. www.sewardcountyfair.com



CHRISTMAS FESTIVAL

Celebrate the start of the Christmas season in Seward the Saturday after Thanksgiving. See Santa arrive on the fire truck in the morning with fun activities around the square. Enjoy the afternoon on a horse and wagon ride and the evening at the Evening Lighted Christmas Parade! Christmas at Concordia the first weekend of December!

GOEHNER SPAGHETTI FEED—MARCH

UTICA HERITAGE DAYS—JULY

CORDOVA PIGEON RACES—JULY

MILFORD FAMILY FUN DAYS—AUGUST

STAPLEHURST VFD STREET DANCE—AUGUST

BEAVER CROSSING BEAVER DAZE & RIB FEST—AUGUST

CU PLUM CREEK CHILDREN'S LITERACY FESTIVAL—OCT.

SEWARD JR. WOMEN'S CRAFT SHOW—NOVEMBER

BEE ANNUAL BARN DANCE—DECEMBER



RIDE THE RIDGE ROAD—Thousands of years ago, great glaciers carved out beautiful hills and valleys, leaving sprinklings of rocks and minerals and a home for magnificent groves of oaks. This area just northeast of Garland is locally known as the Bohemian Alps, a place of quiet and natural beauty.

www.sewardne.com
www.sewardnebraskatourism.com
sewcham@sewardne.com